

## Product details

- **Weight** : 1.6Kg
- **Power supply** : Cable type approx. 2.7m AC100V 50-60Hz
- **Power consumption** : 37W
- **Frequency** : 600rpm ~ 3,600rpm
- **Rated time** : Continuous
- **Colors** : Red, White, Black

Made in Japan



## How to hold and use Bullman8



Gentle massage with both hands

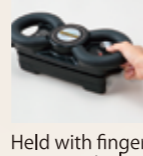
Body weight application with both hands

Pinpoint massage with both hands

Sliding with one hand



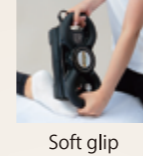
Thin design



Held with finger on control

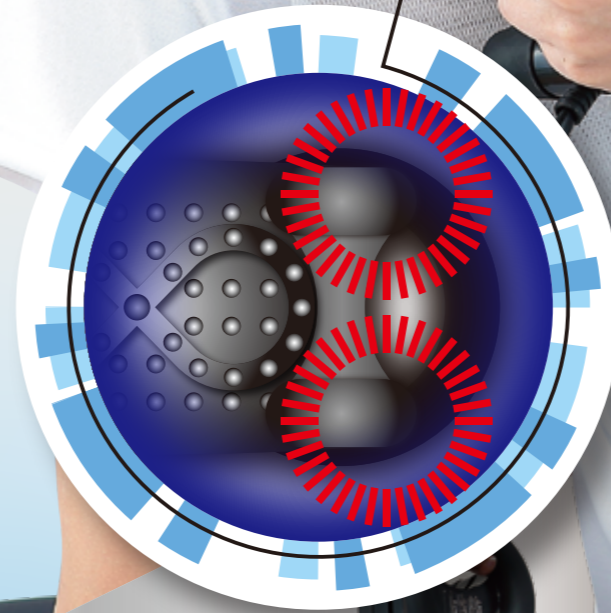


Used on floor



Soft grip

Teranishi's original! **8** shaped vibration



Teranishi's unique **8-shaped** vibration, — more than a professional massage.

### ⚠ Safety precautions

- ⚠ Do not use on head or neck (above bone)
- ⚠ Consult a physician before use if you are currently undergoing medical treatment or feel any physical problems.
- ⚠ Read Instruction manual carefully before use, and use only as directed.

### ■ Effects

- ✓ Soothes tired muscles
- ✓ Eases muscle stiffness
- ✓ Relieves nerve and muscle pain
- ✓ Improves blood circulation to help recover from fatigue

※Please note that specifications or appearance may be changed without advance notice to improve this product.



# Bullman8



*The real massage at home!*

**Bullman8 let experience the real massage at home. Relaxing massage with free hands. Light and compact, freely-handle.**



*Great success at orthopedic clinics!*

**Also, being used by professionals at orthopedic clinics to promote blood circulation before treatment, for self-massage and so one.**



*Teranishi's original!*

**With the Teranishi's unique 8-shaped vibration, which gives a stimulus that penetrates to the deepest body parts.**

## How to use Bullman8 / alone or with partner



**Put on the floor and massage the soles**



**Put down and massage the buttocks**



**Interpose and massage the shoulders**



**Interpose and massage the waist**



**Use with one hand by massaging shoulder**



**Use with both hands by massaging thighs**



**Massaging other's shoulders**



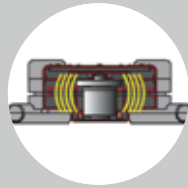
**Massaging other's waist**

## Bullman 8's features



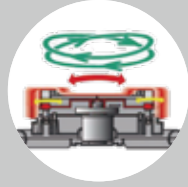
### ● Extra-slow massage

With our own technology and software development, achieved the powerful super slow massage. Kneading to the body's core.



### ● Handle vibration suppression design

By incorporating the counterweight in the appropriate position, the vibration transmitted to the steering wheel has been thoroughly suppressed.



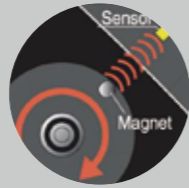
### ● Kneading vibration

The stimulation of protuberances creates thumbs pressure effect by rubbing vibration.



### ● ALR(Auto Load Reduction)

Cylinder mechanism that transmits vibration to the pad, built in the crank part. That cylinder helps to reduce the motor load.



### ● CVD(Constant Velocity Drive)

An ultra-small magnet sensor detects the number the motor's revolutions. Thanks to that, the constant rotation can be maintained even when a load is applied.



### ● High-power, energy-saving designed powerful motor

Maintains strength at high speed and torque at low speed, newly developed whole area high power motor.

## Bullman8's multi-functional diaohragm



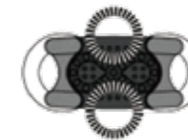
1



### Flat part

Gently massages the entire body with a combination of slippery material and a wide flat surface.

2



### Protuberance parts

The combination of non-slip material and moderate protrusions directly transmit vibration, which gives a strong stimulus to the right point.

3



### Corner parts

The combination of slippery materials and rounded parts at the corners, gives a moderate amount of stimulation.

4



### Arch parts

The combination of slippery material and dented arch part has great relaxing effect for arms or legs.